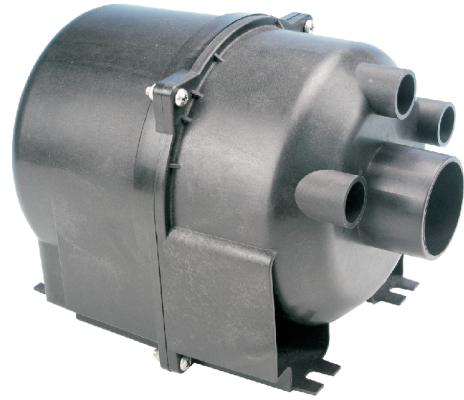


Heating Air Blower

MANUAL INSTRUCTION



Products Performance:

- 220v/50Hz/60Hz or 120v/60Hz
- Protection: IP45; Insulation class B
- Air blower with heater function
- Assemblage thermal protector
- There is fuse inside the motor
- Noise: Air blower with nozzle ≤ 74 dB.
- Recognize certified: CE, EMC

Parts And Materials:

- Pump casing: high temperature resistant reinforce plastic
- Air switch: 15A, 250V (Optional)
- Carbon brush: using import materials

Using and Installing:

- The number of nozzle installed should be more than the number of regulation minimum.
- The installation of distributor must be higher than the using water-level in case water come into air blower pump. (Fig.1)
- The connect pipe of air blower pump must use resist heat pipe.
- Air blower pump must be installed fixed, and the connect pipe must be fastened.

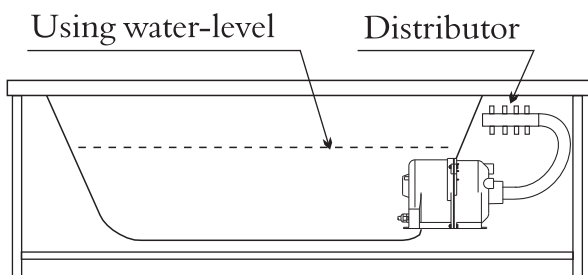
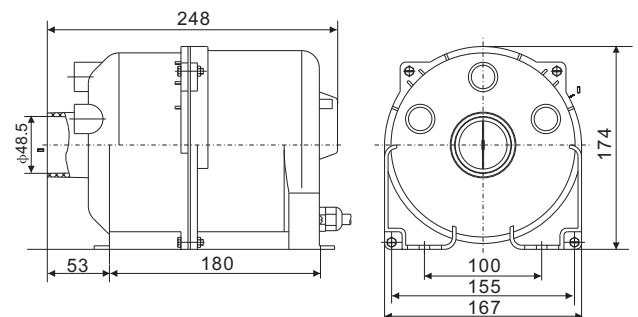


Fig.1

Products model and the main technology parameter

Model	Motor Power P_1 (W)	Heater Power (W)	Heating temperature	Number of nozzle
APR800	650~700	180	50-56°C	16-32

Installation Structure



CAUTION

- Air blower pump must be grounded in order to prevent electrical shock or injury.
- Outlet of air blower pump can not be stuffed up when it is operating.
- When the outlet air flow is too small, the air temperature will increase, pay attention to prevent scald.
- The power must be cut off before checking the air blower pump.